

V-F

(1) V (2) V (3) F (4) F (5) V (6) V (7) V (8) V (9) V (10) V (11) F

(12) $ED^1 = \left| 3 \cdot \frac{5}{3} \right| = \left| \frac{5}{3} \right|$; $ED^2 = \left| 3 \cdot \frac{1}{5} \right| = \left| \frac{3}{5} \right|$ (13) F; 150

EMPIRICO

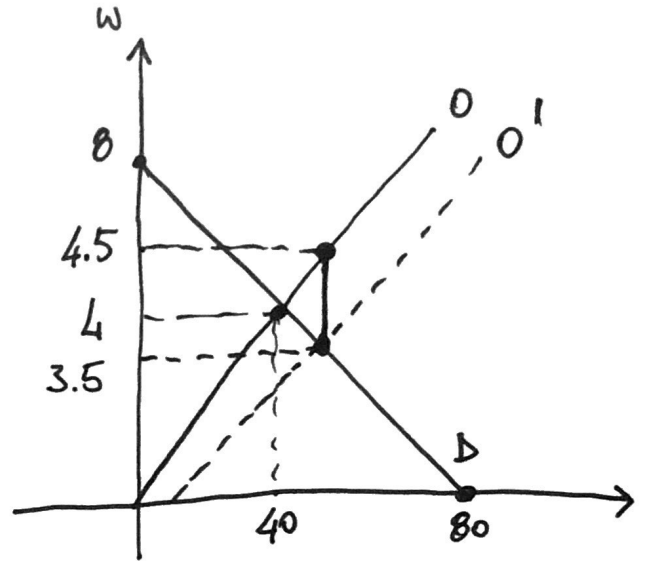
$L^O = 10W$; $L^D = 80 - 10W$

(a) $10W = 80 - 10W$
 $20W = 80 \rightarrow W = 4$; $L = 40$

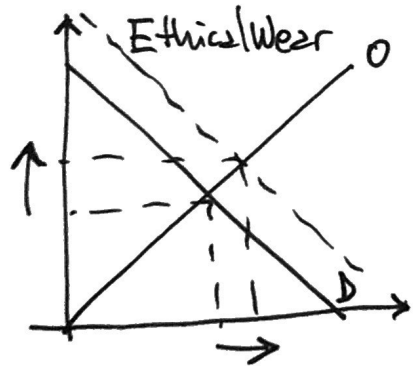
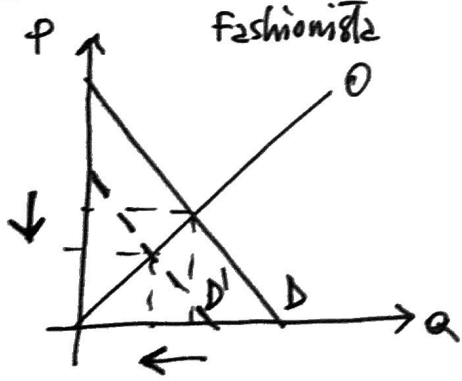
(b) $L^O = 10 \cdot 5 = 50$
 $L^D = 80 - 10(5) = 30$] 20 unib' disoccupate

(c) $L^O = 80 - 10(W - 1)$
 $L^D = 80 - 10W + 10 \rightarrow L^D = 90 - 10W$

$90 - 10W = 10W$
 $20W = 90$
 $W^* = 4.5$
 $L^* = 45$



TEORICHE



DA QUELLO CHE HO LETTO, VI CONSIGLIO DI STUDIARE LA TEORIA.

